

TORUS 2000 VERTICAL

Category II or Category IV Appliance

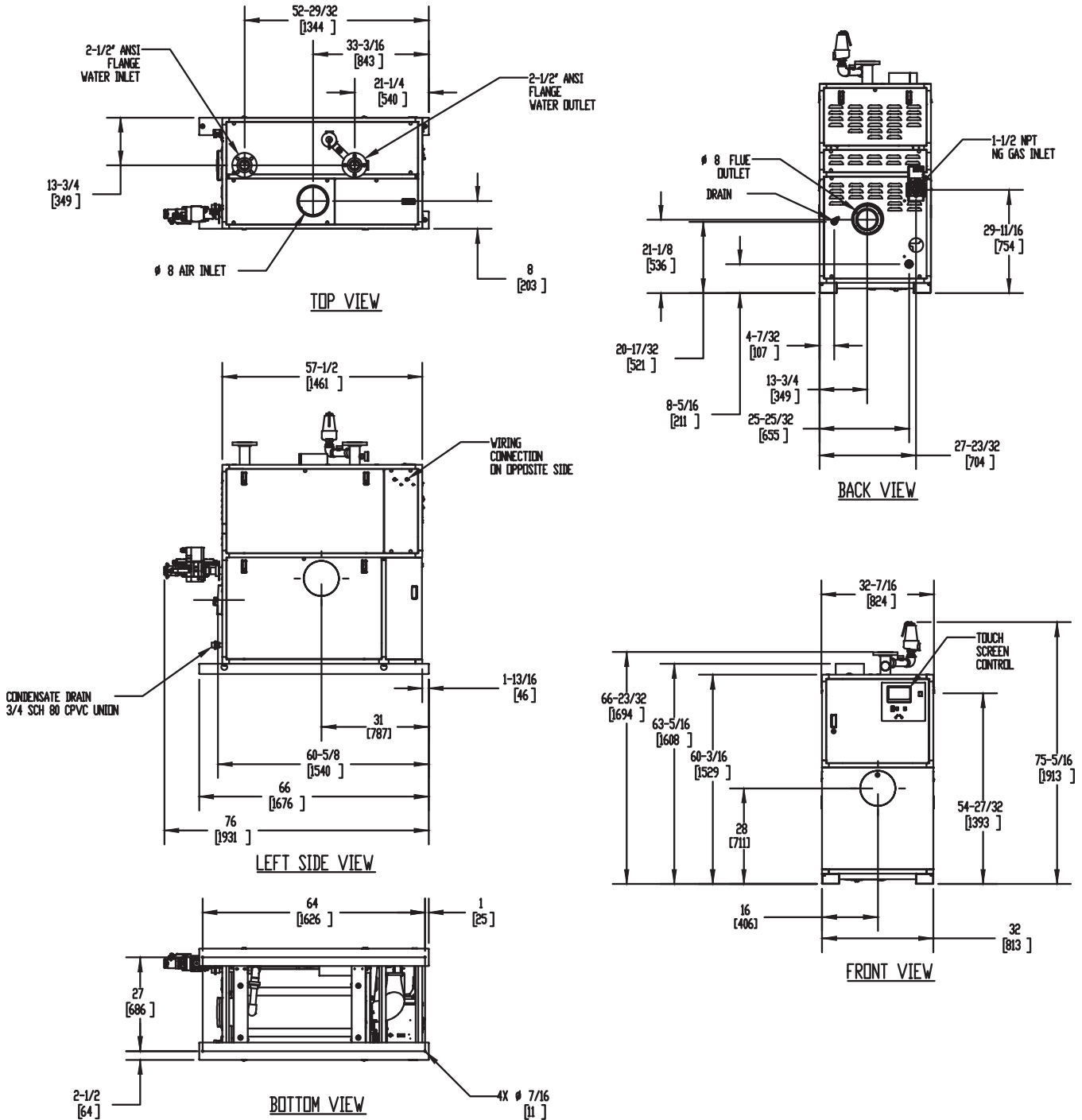
(see Installation and Operation Manual for venting information)

CODE OPTIONS

CSD-1

FIRMWARE W/REMOTE TEST
MANUAL RESET LWCO

INDOOR UNIT



Notes:

1. Dimensions are approximate and should not be used to "rough-in" equipment.
2. Dimensions are subject to change without notice.
3. All dimensions are in inches (mm).
4. ⦿ Symbol indicates center of gravity.

TORUS 2000 VERTICAL

Category II or Category IV Appliance

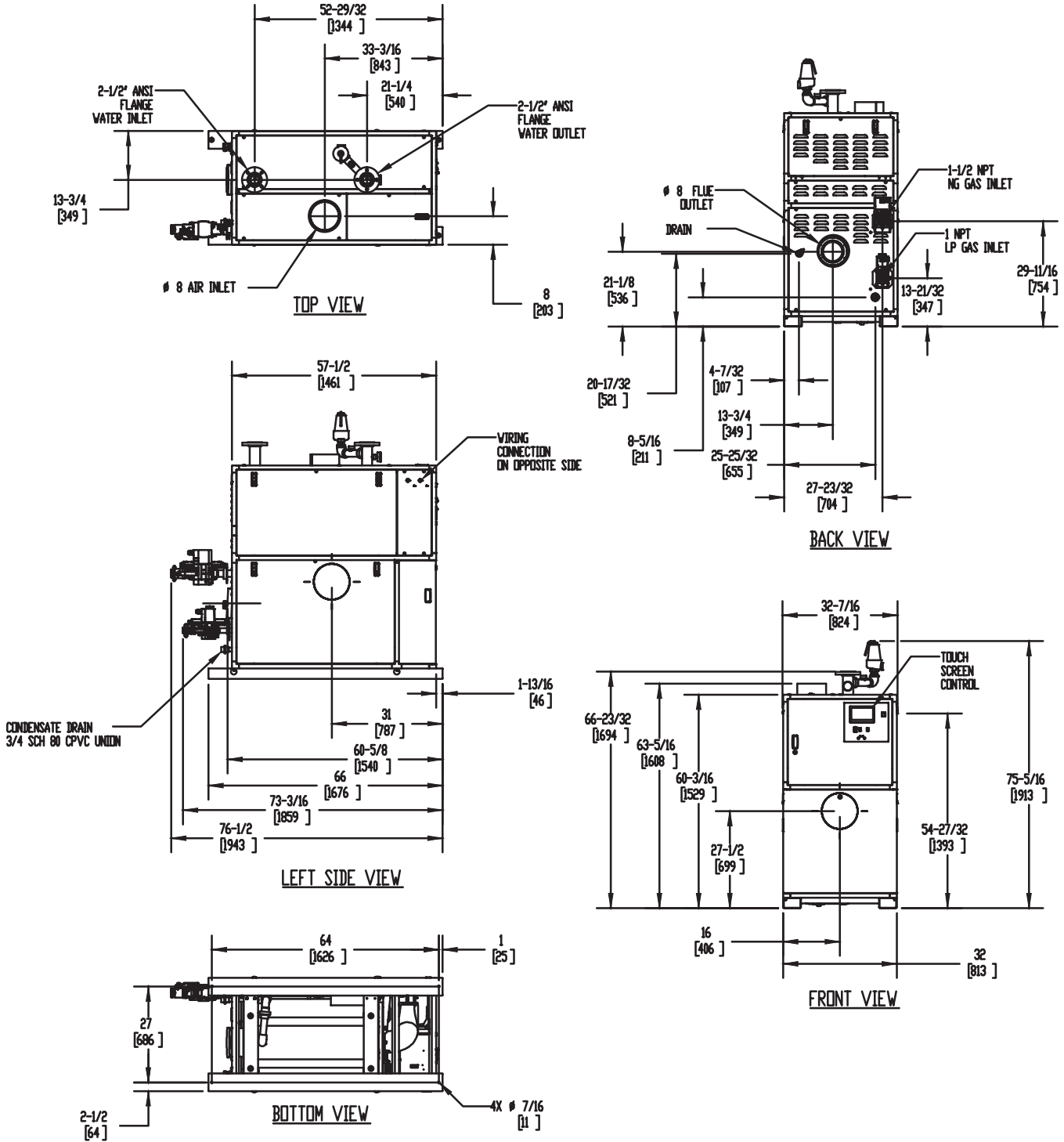
(see Installation and Operation Manual for venting information)

CODE OPTIONS

CSD-1

FIRMWARE W/REMOTE TEST
MANUAL RESET LWCO

DUAL FUEL UNIT



Notes:

1. Dimensions are approximate and should not be used to "rough-in" equipment.
2. Dimensions are subject to change without notice.
3. All dimensions are in inches (mm).
4. Symbol indicates center of gravity.

BOILER CERTIFIED RATINGS & CAPACITIES

| | | | |
|--------------------------------|---------------------|-----------------------------------|-------------------|
| Fuel Type | Natural/Propane Gas | Boiler FLA | 25.6 |
| Input BTU/hr. | 1,999,000 / 586 kW | Boiler HP | 57.66 |
| Output BTU/hr. | 1,929,035 / 565 kW | Min. Gas Pressure Required | 4" W.C. |
| Electrical Requirements | 230 VAC/60 Hz/1PH | Max. Gas Pressure Allowed | 14" W.C. |
| | | Operating Weight | 1388 lbs / 630 kg |

BOILER TRIM & CONTROLS

| | | | |
|--|---------------|----------------------------|--------------------------|
| Main Gas Valve | Dungs MBC | Air Switch | Huba |
| Firing Valve | 1 1/2" Apollo | Flow Switch | SIKA |
| Ignition Control | Fenwal | Blocked Flue Switch | Cleveland NS2 |
| Operating Control | HeatNet® | Blower Motor | Ametek |
| High Limit | Jumo | L.W.C.O. | 800 |
| Main Ball Valve | 1 1/2" Apollo | Relief Valve (WB) | 1" x 1-1/4" set @ 50 psi |
| Pump contactor strongly recommended for water heater applications. | | Relief Valve (WW) | 1" x 1" set @ 125 psi |

A.S.M.E.

| | | | |
|--------------------------------|-------------------------------|---------------------|-----------------------|
| ASME Sect IV Fire Side | 153.19 Sq. Ft. / 14.23 Sq. M. | Design Data | Max. 160 psig & 210°F |
| Htg Surface | | Water Volume | 16.9 gal. / 64 Liters |
| ASME Sect IV Water Side | 141.93 Sq. Ft. / 13.19 Sq. M. | pH Level | 6.5-8.5 |
| Htg Surface | | | |

* Add circulator amps.

BOILER TEMPERATURE RISE / PRESSURE DROP (Based on Full Input)

| 20°F / 11.1°C | | | | 30°F / 16.7°C | | | | 40°F / 22.2°C | | | | 50°F / 27.8°C | | | | 60°F / 33.3°C | | | |
|---------------|------|---------------|------|---------------|-----|---------------|------|---------------|-----|---------------|------|---------------|-----|---------------|------|---------------|-----|---------------|-----|
| Flow Rate | | Pressure Drop | | Flow Rate | | Pressure Drop | | Flow Rate | | Pressure Drop | | Flow Rate | | Pressure Drop | | Flow Rate | | Pressure Drop | |
| GPM | L/s | Ft | kPa | GPM | L/s | Ft | kPa | GPM | L/s | Ft | kPa | GPM | L/s | Ft | kPa | GPM | L/s | Ft | kPa |
| 193.0 | 12.2 | 22.3 | 66.5 | 128.7 | 8.1 | 9.9 | 29.7 | 96.5 | 6.1 | 6.1 | 18.2 | 77.2 | 4.9 | 4.2 | 12.5 | 64.3 | 4.1 | 3.1 | 9.2 |


| Flow GPM (Boiler) | | Temp. Rise (°F) (Boiler**) | | Vent Length (Equiv. Ft.) | | Air Inlet Length (Equiv. Ft.) | |
|-------------------|-------|----------------------------|-----|--------------------------|-----|-------------------------------|-----|
| Min | Max | Min | Max | Min | Max | Min | Max |
| 64.3 | 193.0 | 20 | 60 | 8 | 160 | 0 | 160 |

** Min/Max delta t reflects boiler operation at full input. For applications requiring operation above/below these parameters please consult factory.

WATER HEATER HOURLY RECOVERY CAPACITY (GPH & LPH)

| 40°F | 22°C | 60°F | 33°C | 80°F | 44°C | 100°F | 56°C | 120°F | 67°C | 140°F | 78°C |
|------|-------|------|-------|------|-------|-------|------|-------|------|-------|------|
| 5819 | 21997 | 3880 | 14665 | 2910 | 10999 | 2328 | 8799 | 1940 | 7332 | 1663 | 6285 |

| Water Heater Min Flow Rates | | | | | | | |
|-----------------------------|-----|---------------|------|---------------------|------|---------------|------|
| Normal (4 to 12) gpg | | | | Hard (12 to 15) gpg | | | |
| Flow Rate | | Pressure Drop | | Flow Rate | | Pressure Drop | |
| gpm | L/s | Ft | kPa | gpm | L/s | Ft | kPa |
| 153.5 | 9.7 | 14.1 | 42.1 | 204.6 | 12.9 | 25.0 | 74.7 |

| | | |
|---------------------|-------|---|
| REP FIRM | _____ | <div>TORUS 2000 VERTICAL</div> <div>Category II or Category IV Appliance (see Installation and Operation Manual for venting information)</div> <div>  A Division of Mestek, Inc. Westfield, MA 01085 (413) 564-5515 </div> |
| SUBMITTED BY | _____ | |
| JOB NAME | _____ | |
| ARCHITECT | _____ | |
| ENGINEER | _____ | |
| CONTRACTOR | _____ | |
| DATE | _____ | |